

Tie Dye Coffee Filter Flower



Materials:

- *6 white coffee filters per flower*
- *Food coloring*
- *Water spray bottle*
- *Glue*
- *Tape*
- *Chopsticks (or pencil, pen, pipe cleaner)*
- *Scissors*



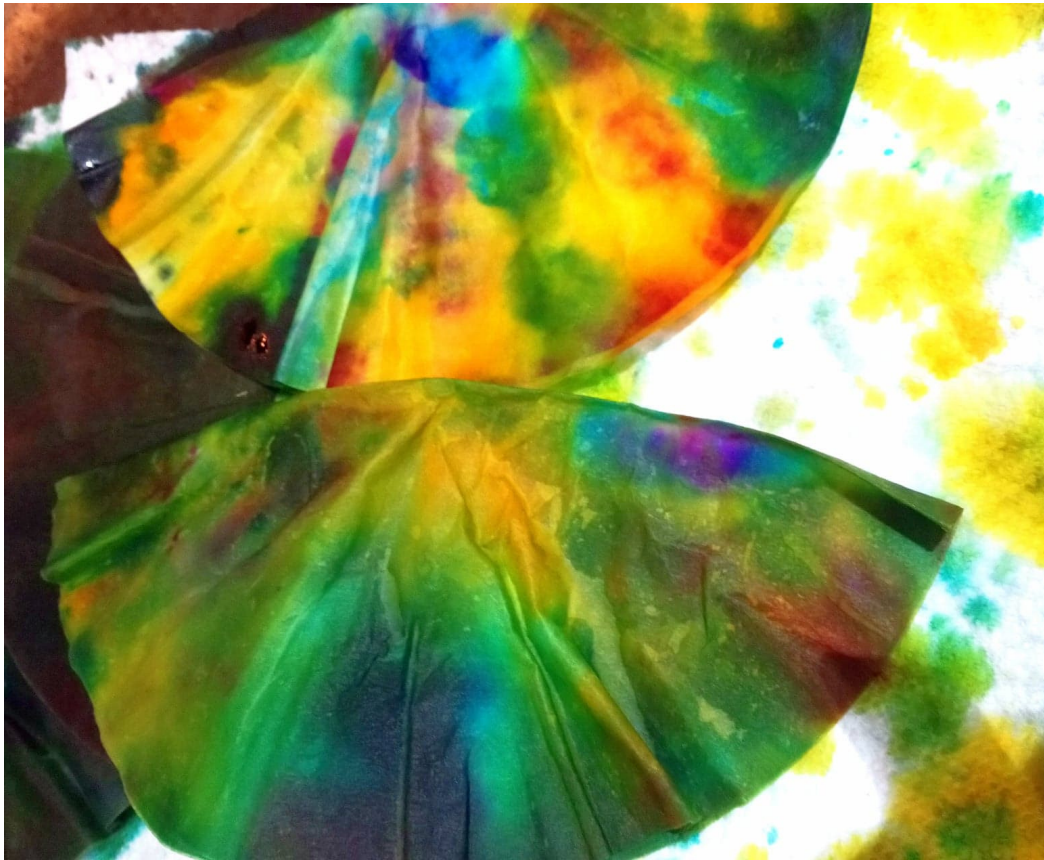
Coffee filters flowers are beautiful and such a fun Spring craft! I chose to color extra filters so I could pick my favorite to include in my flower. I made three separate piles of three filters (9 filters all together), you only need 6 filters for one flower. I played with different colors combinations, some lighter and some darker. Combining both in one flower later made for good contrast.



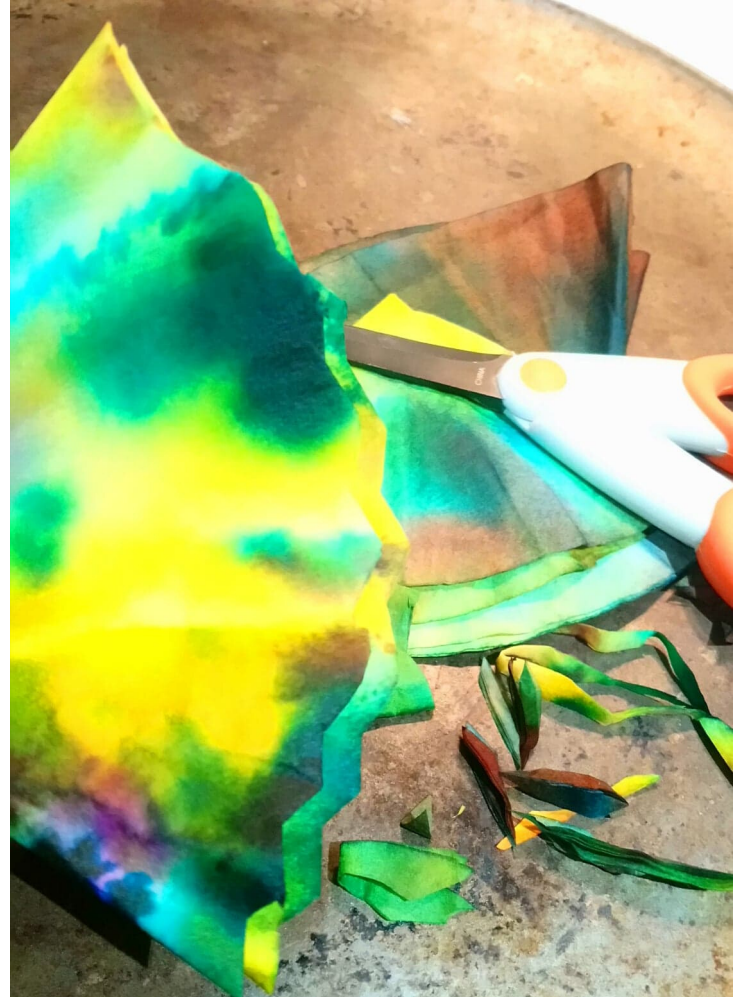
1. Take one pile of filters and fold them in half, then half again. Begin to add food coloring. If you do not have food coloring you can color with markers and spray, this will take a bit longer. Leave some white space, do not oversaturate, but still cover most of it. Continue to do this to your other piles in a variety of colors.

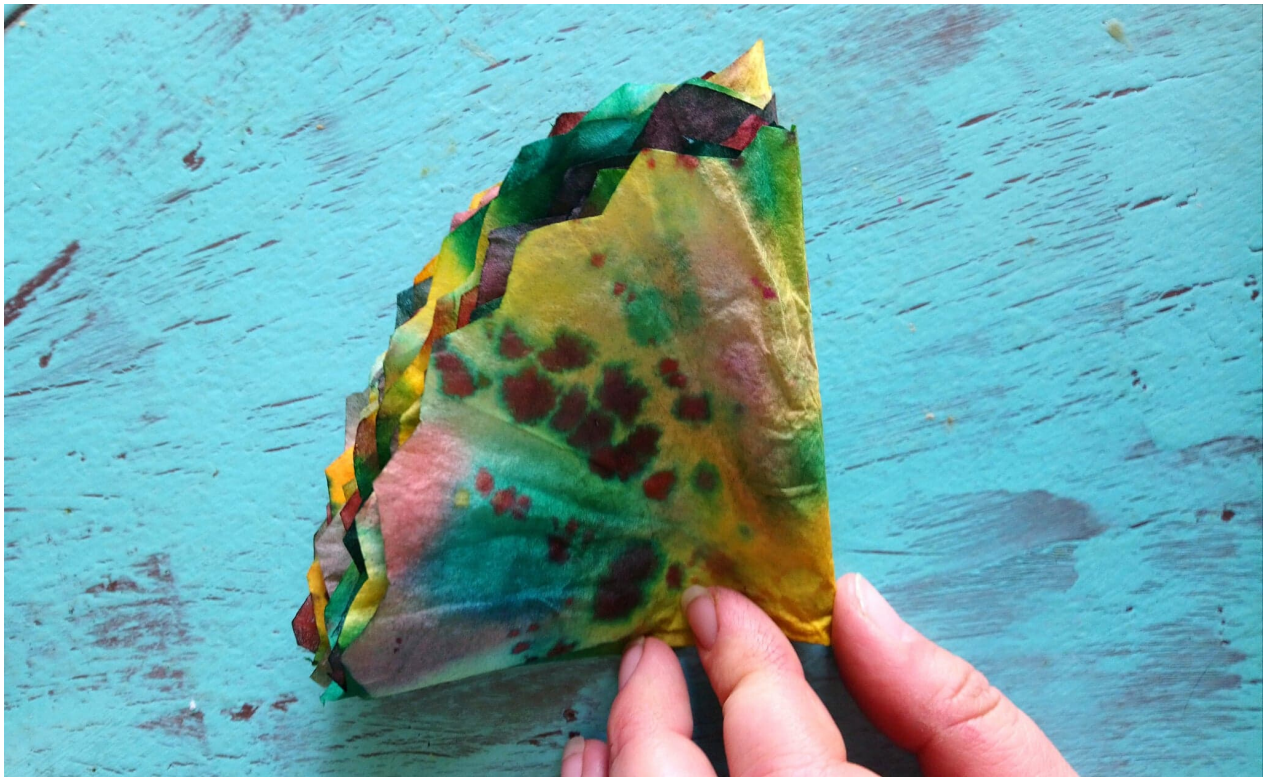


2. Next, spray or mist with water. The water will move the colors and spread them into each other giving a tie dye effect. Food coloring works best to achieve this, but markers will do a nice job too.



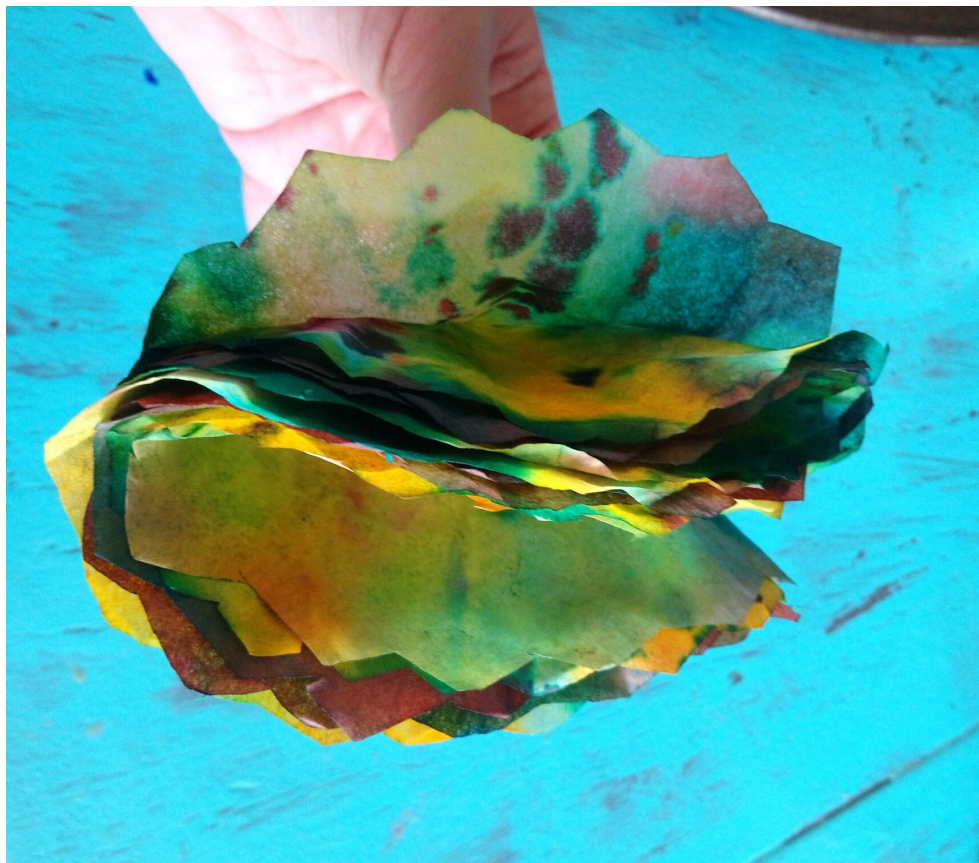
3. You can cut the edges for a scalloped look when dry or wet. Decide if the edges will be pointed or curved. Cut with filter folded in half not quarters. Let dry completely, it may take a few hours to truly dry.





4. create a new pile of 6 filters with your favorite dyed filters. Fold the pile in half, then half again, creating a triangle shape. Pinch the pointed end with your fingers. Start to gently spiral the filters or twist them while carefully opening the petals.





5. This will take some time, but continue to form the flower to your desired taste. Do you want it to be more open or closed? More spiraled or free form? Then, slide the chop stick in and start to form the flower base around the stick. Put a few drops of glue on the stick and fold the petals around it. Once you have it the way you like you can tape the end closed around the stick or staple it, hot glue would work fast too.





Now you have a fine looking tie dye flower for your garden!